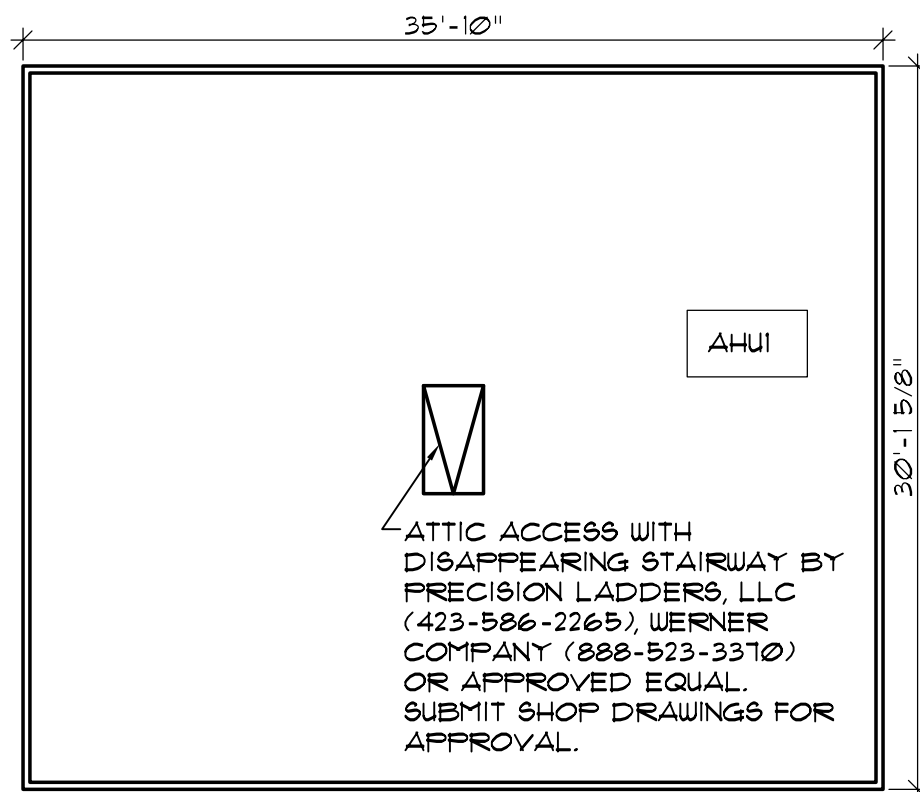
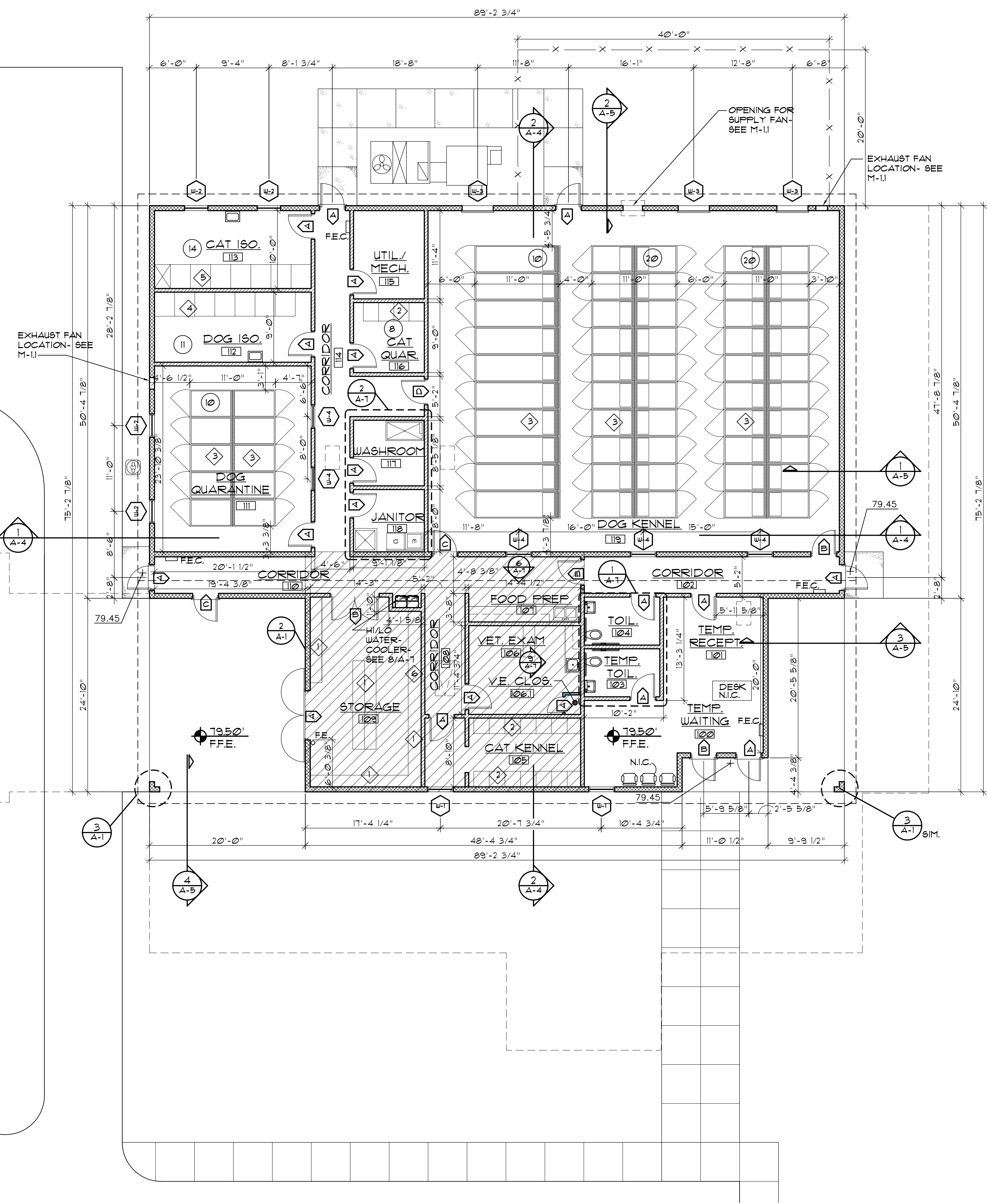


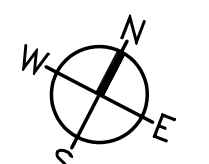
3 CMU COLUMN DETAIL
 SCALE: 1 1/2" = 1'-0"



2 MECHANICAL ATTIC PLAN
 SCALE: 1/8" = 1'-0"



1 FLOOR PLAN (BASE BID)
 SCALE: 1/8" = 1'-0"

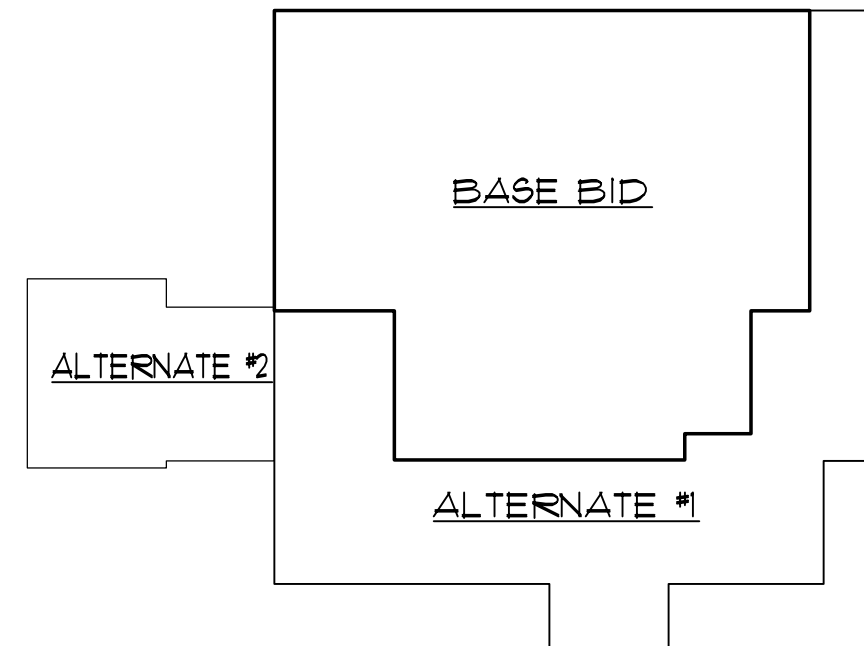


- GENERAL NOTES:**
1. THE CONTRACTOR IS TO CHECK AND VERIFY ALL DIMENSIONS AND CONDITIONS AT THE JOB SITE BEFORE COMMENCING TO BUILD.
 2. THE CONTRACTOR IS TO CONFORM TO REQUIREMENTS OF THE NC BUILDING CODE AND ALL APPLICABLE REGULATIONS AND ORDINANCES.
 3. CONTRACTOR TO PROVIDE CONTROL JOINTS IN EXTERIOR CMU CURSING WHERE DESIGNATED ON ELEVATIONS (SHEET A-12). CONTROL JOINTS TO HAVE PRE-FORMED INSERTS AND ELASTOMERIC CAULK TO MATCH MORTAR.
 4. SEE ROOM FINISH SCHEDULE FOR WALL & CEILING HEIGHTS.
 5. PROVIDE CONTROL EXPANSION JOINTS IN CONCRETE SLAB AS REQUIRED TO PREVENT UNCONTROLLABLE CRACKING. CONTRACTOR IS RESPONSIBLE FOR REPAIR SHALL BE AT NO ADDITIONAL COST TO OWNER.
 6. MAINTAIN ALL APPLICABLE ADA CLEARANCES AND CONDITIONS.

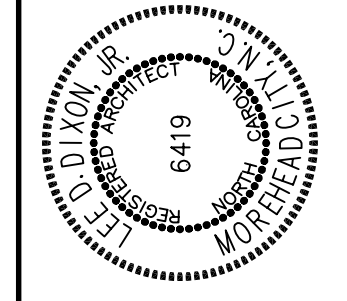
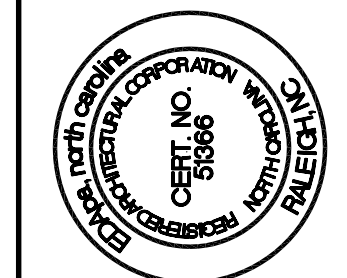
7. PROVIDE ALL DRAFTSTOPPING AS REQUIRED BY CODE.
8. PROVIDE TRANSITION STRIP AT ALL DISSIMILAR FLOOR FINISHES.
9. INTERIOR NON LOAD BEARING WALLS ARE 6" CMU U.O.N. EXTERIOR WALLS ARE 8" CMU U.O.N.
10. SEE SPECIFICATIONS FOR FIRE EXTINGUISHER TYPES.
 - F.E.C. = FIRE EXTINGUISHER AND CABINET
 - F.E. = FIRE EXTINGUISHER ON STANDARD HOOK

11. ALL APPLIANCES AND FIXTURES SHALL BE ADA COMPLIANT WHEN INSTALLED (WHETHER BY CONTRACTOR OR BY OWNER).
- CMU WALL (8" CMU)
NOTE: ALL EXTERIOR BLOCK TO BE SPLIT FACE.
 - CMU WALL (6" CMU)
 - 3 1/2" METAL STUD WALL @ 16" O.C.
 - MECHANICAL ATTIC AREA ABOVE
 - ATTIC ACCESS PANEL ABOVE
 - ATTIC ACCESS LADDER ABOVE

- LEGEND:**
- 1 "SUPER ERECTA SHELF" BY METRO INDUSTRIES, GLOBAL INDUSTRIAL OR APPROVED EQUAL W/ (4) ADJUSTABLE HEIGHT STAINLESS STEEL SHELVES. SUBMIT SHOP DRAWINGS FOR APPROVAL.
 - 2 RAIN TREE CAT CONDO UNITS BY MASON COMPANY (800-543-5561), J.R. KENNEL MANUFACTURING OR APPROVED EQUAL. SUBMIT SHOP DRAWINGS FOR APPROVAL.
 - 3 DOG KENNELS BY MASON COMPANY (800-543-5561), J.R. KENNEL MANUFACTURING OR APPROVED EQUAL. SUBMIT SHOP DRAWINGS FOR APPROVAL.
 - 4 "ISO-CARE" ISOLATION UNITS (3 SINGLE LOWER UNITS, 4 DOUBLE DECK UNITS) BY MASON COMPANY (800-543-5561), J.R. KENNEL MANUFACTURING OR APPROVED EQUAL. SUBMIT SHOP DRAWINGS FOR APPROVAL.
 - 5 "ISO-CARE" ISOLATION UNITS (1 DOUBLE DECK UNITS) BY MASON COMPANY (800-543-5561), J.R. KENNEL MANUFACTURING OR APPROVED EQUAL. SUBMIT SHOP DRAWINGS FOR APPROVAL.
 - 6 DATA-COM RACK-CABINET & BACKBOARD



BASE BID



SEE US FOR ALL DRAWINGS, SPECIFICATIONS, AND OTHER DOCUMENTS. These documents prepared by EDA pa are hereby submitted to this project. EDA pa shall retain the right to make any changes to these documents for the project. No contract shall be entered into without the written consent of the Designer.

4706 Bridges Street Extension, Suite C
 Morehead City, North Carolina 28557
 Telephone: 252.247.6074 Fax: 252.247.6074
 Email: edna@ednapa.com

EDA pa
 Architects □ Engineers □ Planners
 Morehead City

ROCKINGHAM COUNTY ANIMAL FACILITY
 WENTWORTH, NORTH CAROLINA

FLOOR PLAN (BASE BID)

2008409

ISSUED: 08 DEC. 09
 DWG BY: LSA, CLW
 CKD BY: LDD

REVISIONS

SHEET NO.
A-1
 OF