

ROOM FINISH SCHEDULE						
ROOM NUMBERS	ROOM	FLOORS	BASE	WALLS	CEILING	HGT.
100	WAITING	VCT	VINYL	CMU-PTD	GWB-PTD	11'-1" AFF.
101	RECEPTION	↓	↓	↓	↓	↓
102	CORRIDOR	CONC./EPOXY	↓	↓	↓	↓
103	TOILET	SHEET VINYL	VINYL	↓	↓	↓
104	TOILET	SHEET VINYL	↓	↓	↓	↓
105	CAT KENNEL	CONC./EPOXY	↓	↓	AQUA TOUGH-PTD	↓
106	VET. EXAM	↓	↓	CMU-PTD/GWB-PTD	↓	↓
106.1	V.E. CLOSET	↓	↓	CMU-PTD/GWB-PTD	GWB-PTD	↓
107	FOOD PREP.	↓	↓	CMU-PTD	↓	↓
108	CORRIDOR	↓	↓	↓	↓	↓
109	STORAGE	SEALED CONC.	↓	↓	↓	↓
110	CORRIDOR	CONC./EPOXY	↓	↓	↓	↓
111	DOG QUARANTINE	↓	↓	↓	AQUA TOUGH-PTD	↓
112	DOG ISOLATION	↓	↓	↓	↓	↓
113	CAT ISOLATION	↓	↓	↓	↓	↓
114	CORRIDOR	↓	↓	↓	GWB-PTD	↓
115	UTILITY/MECHANICAL	SEALED CONC.	↓	↓	↓	↓
116	CAT QUARANTINE	CONC./EPOXY	↓	↓	AQUA TOUGH-PTD	↓
117	WASHROOM	↓	↓	↓	↓	↓
118	JANITOR	↓	↓	↓	↓	↓
119	DOG KENNEL	↓	↓	↓	↓	↓

AFF. - ABOVE FINISH FLOOR
 CONC./EPOXY - CONCRETE W/ EPOXY FLOORING
 GWB. - GYPSUM WALL BOARD
 PTD - PAINTED
 VCT - VINYL COMPOSITE TILE

- ① EPOXY PAINT TO 4'-0" COURSING AFF/ ALKYD ENAMEL TO TOP OF MASONRY
- ② EPOXY PAINT FLOOR TO CEILING
- ③ EPOXY COATING @ CONCRETE SLAB
- ④ ALKYD ENAMEL FLOOR TO CEILING
- ⑤ USG FIBEROCK BRAND AQUA-TOUGH @ CEILING IF ALT. #1 TO BE COMPLETED.

DOOR SCHEDULE						
DOOR NO.	SIZE	DOOR		FRAME		REMARKS
		MAT.	TYPE	MAT.	TYPE	
100A	3'-0" x 7'-0"	ALUM.	A	ALUM.	1	① ⑤
100B	3'-0" x 7'-0"	ALUM.	A	ALUM.	1	① ⑤
101A	3'-0" x 7'-0"	SCW	C	HM	2	① ⑤
102A	3'-0" x 7'-0"	FG	B	FG	3	① ⑤
103A	3'-0" x 7'-0"	SCW	C	HM	2	① ② ⑤
104A	3'-0" x 7'-0"	SCW	C	HM	2	① ② ⑤
105A	3'-0" x 7'-0"	FG	B	FG	3	① ⑤
106A	3'-0" x 7'-0"	FG	B	FG	3	① ⑤
106.1A	2'-0" x 7'-0"	INS. MTL	D	HM	1	① ⑤
109A	(2) 3'-0" x 7'-0"	FG	E	FG	5	① ② ③
109B	(2) 3'-0" x 7'-0"	FG	B	FG	5	②
110A	3'-0" x 7'-0"	ALUM.	A	ALUM.	1	① ⑤
110B	3'-0" x 7'-0"	FG	B	FG	3	① ⑤
110C	3'-0" x 7'-0"	FG	E	FG	4	① ⑤
111A	3'-0" x 7'-0"	FG	F	FG	3	① ② ⑤
112A	3'-0" x 7'-0"	FG	B	FG	3	① ② ⑤
113A	3'-0" x 7'-0"	FG	B	FG	3	① ② ⑤
114A	3'-0" x 7'-0"	FG	B	FG	3	① ② ⑤
115A	3'-0" x 7'-0"	FG	B	FG	3	① ⑤
116A	3'-0" x 7'-0"	FG	B	FG	3	① ② ⑤
117A	3'-0" x 7'-0"	FG	B	FG	3	②
118A	3'-0" x 7'-0"	FG	B	FG	3	②
119A	3'-0" x 7'-0"	FG	B	FG	3	① ② ⑤
119B	3'-0" x 7'-0"	FG	B	FG	3	① ② ⑤
119C	3'-0" x 7'-0"	FG	B	FG	3	① ② ⑤
119D	3'-0" x 7'-0"	FG	B	FG	3	① ② ⑤

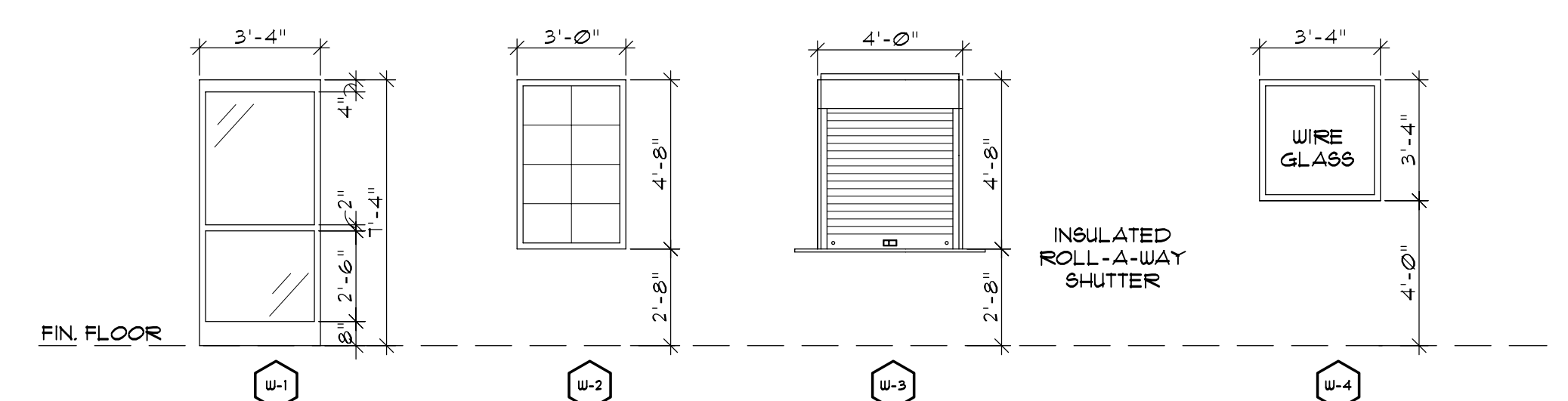
- ① CLOSER REQUIRED
- ② S.S. KICK PLATE REQUIRED
- ③ HOLD OPEN REQUIRED
- ④ PUSH/PULL HARDWARE REQUIRED
- ⑤ PANIC HARDWARE

GENERAL NOTES:

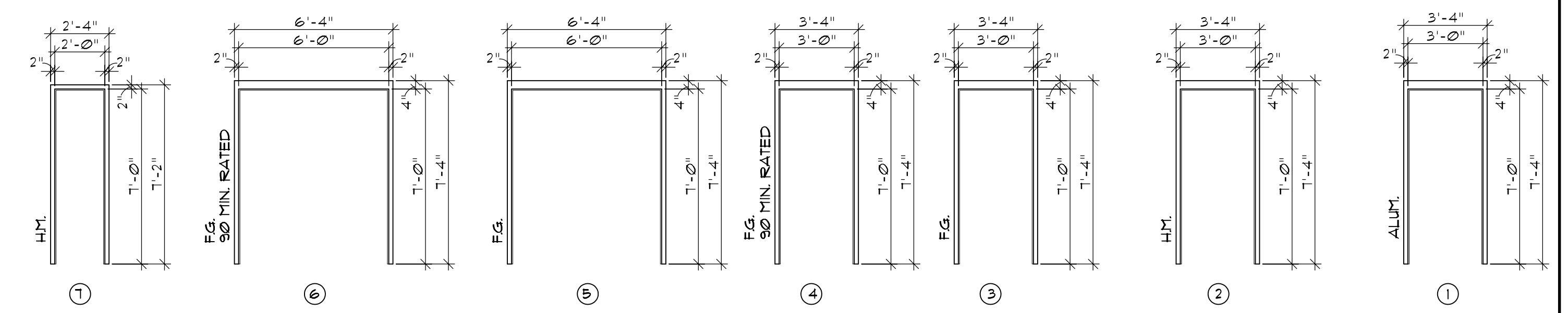
- ALL DOORS THAT OPEN TO A WALL SHALL HAVE RUBBER WALL DOOR STOP.
- ALUMINUM DOOR & FRAME SHALL BE KAUNEER OR APPROVED EQUAL. FRAMES SHALL BE THERMALLY BROKEN AND FACTORY FINISHED. SUBMIT FULL RANGE OF COLORS FOR SELECTION.
- FIBERGLASS DOORS & FRAMES ARE BY TIGER DOORS (888-891-4416) OR APPROVED EQUAL.

ALUM. - ALUMINUM
 FG. - FIBERGLASS
 WD. - WOOD
 S.S. - STAINLESS STEEL
 INS. MTL - INSULATED METAL

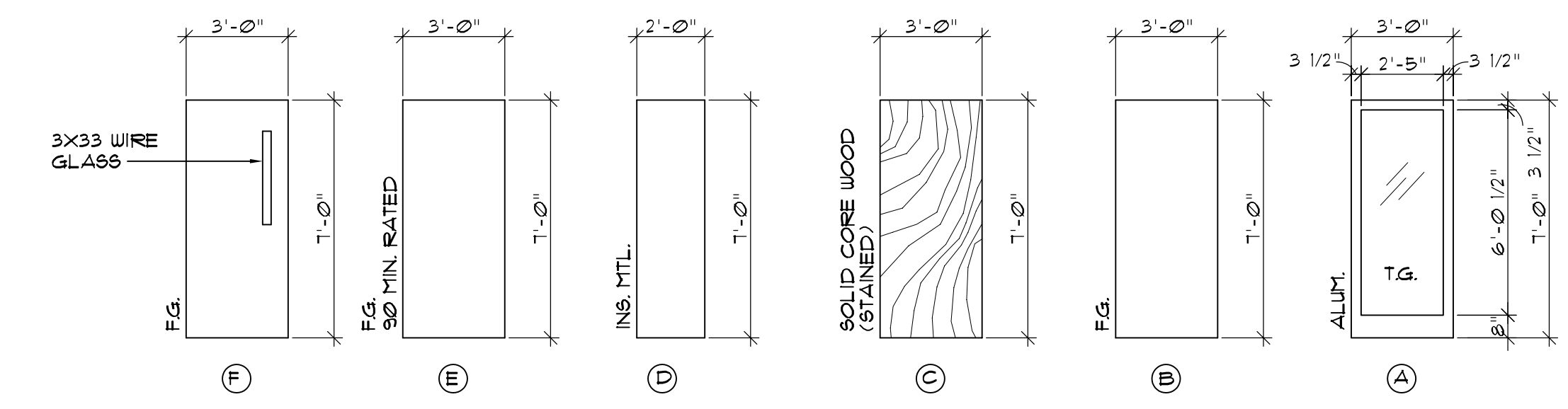
WINDOW SCHEDULE				
MARK	TYPE	SIZE	MODEL	REMARKS
W-1	KAUNEER ALUMINUM STOREFRONT	3'-4" x 7'-4"	TRIFAB 11 451	W/ APPLIED GRID
W-2	KAUNEER ALUMINUM STOREFRONT	3'-0" x 4'-8"	TRIFAB 11 451	W/ APPLIED GRID
W-3	STEEL COILING DOOR	4'-0" x 4'-8"	ROLL-A-WAY SHUTTER	W/ INSULATED POLYMER COMPOSITE CURTAIN
W-4	GALVANIZED HOLLOW METAL	3'-4" x 3'-4"	-	W/ WIRE GLASS



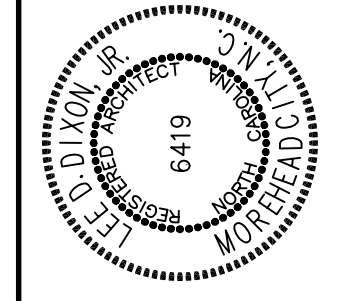
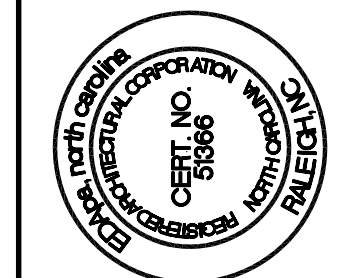
③ WINDOW ELEVATION
 SCALE: 1/4" = 1'-0"
 NOTE: HM. FRAME TO BE PAINTED



② FRAME ELEVATIONS
 SCALE: 1/4" = 1'-0"

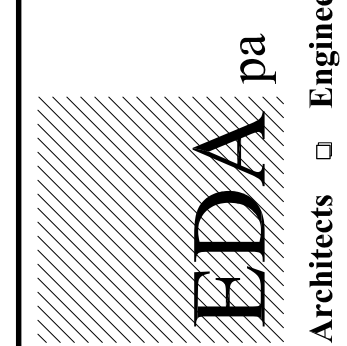


① DOOR ELEVATIONS
 SCALE: 1/4" = 1'-0"



USE OF THIS DRAWING, SPECIFICATIONS, AND OTHER DOCUMENTS PREPARED BY EDA PA ARCHITECTS IS LIMITED TO THE PROJECT AND SITE SPECIFICALLY IDENTIFIED HEREIN. NO PART OF THESE DOCUMENTS SHALL BE REPRODUCED OR TRANSMITTED IN ANY FORM OR BY ANY MEANS, ELECTRONIC OR MECHANICAL, WITHOUT WRITTEN CONSENT BY THE DESIGNER.

4706 Bridges Street Extension, Suite C
 Raleigh, North Carolina 27617
 Telephone: 252.247.2127 Fax: 252.247.0674
 Email: edna@ednapa.com



ROCKINGHAM COUNTY
 ANIMAL FACILITY
 WENTWORTH, NORTH CAROLINA

SCHEDULES (BASE BID)

2008409

ISSUED: 08 DEC. 09
 DWG BY: LSA
 CKD BY: LDD

REVISIONS

SHEET NO.
 A-2
 OF

BASE BID