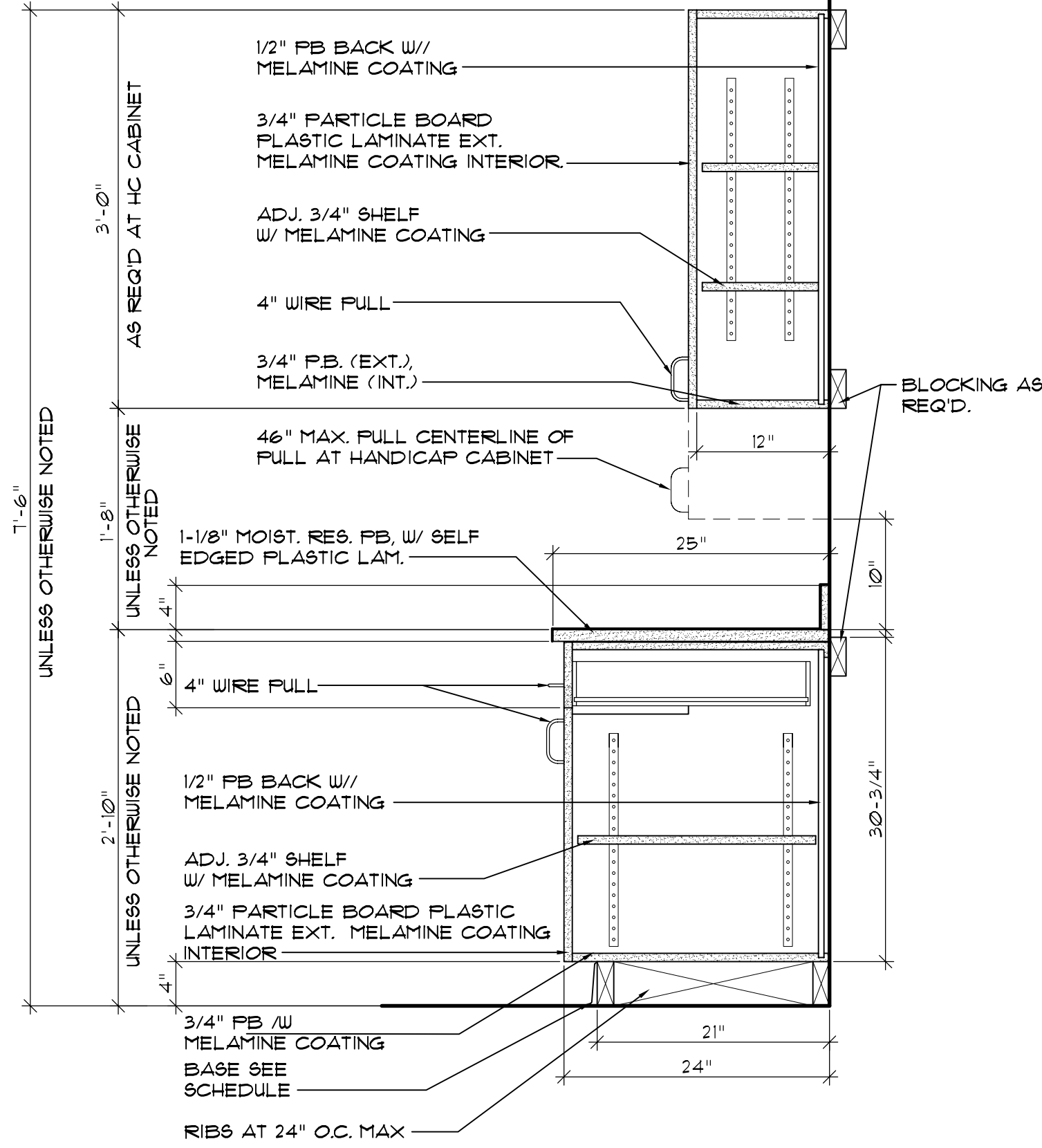
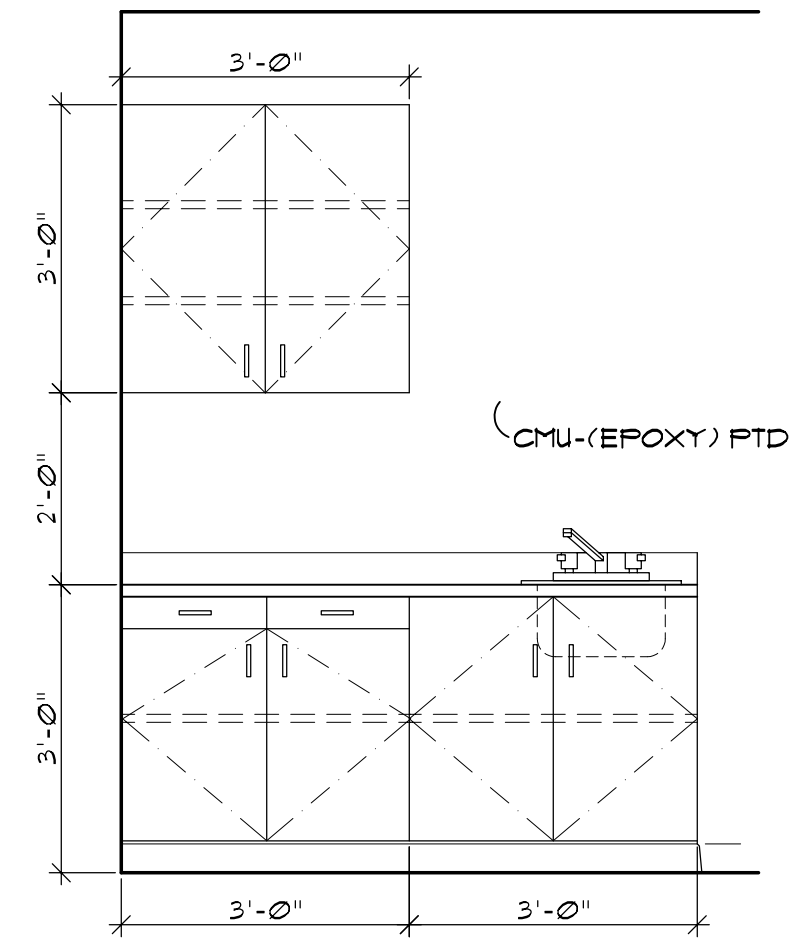


**GENERAL NOTES:**

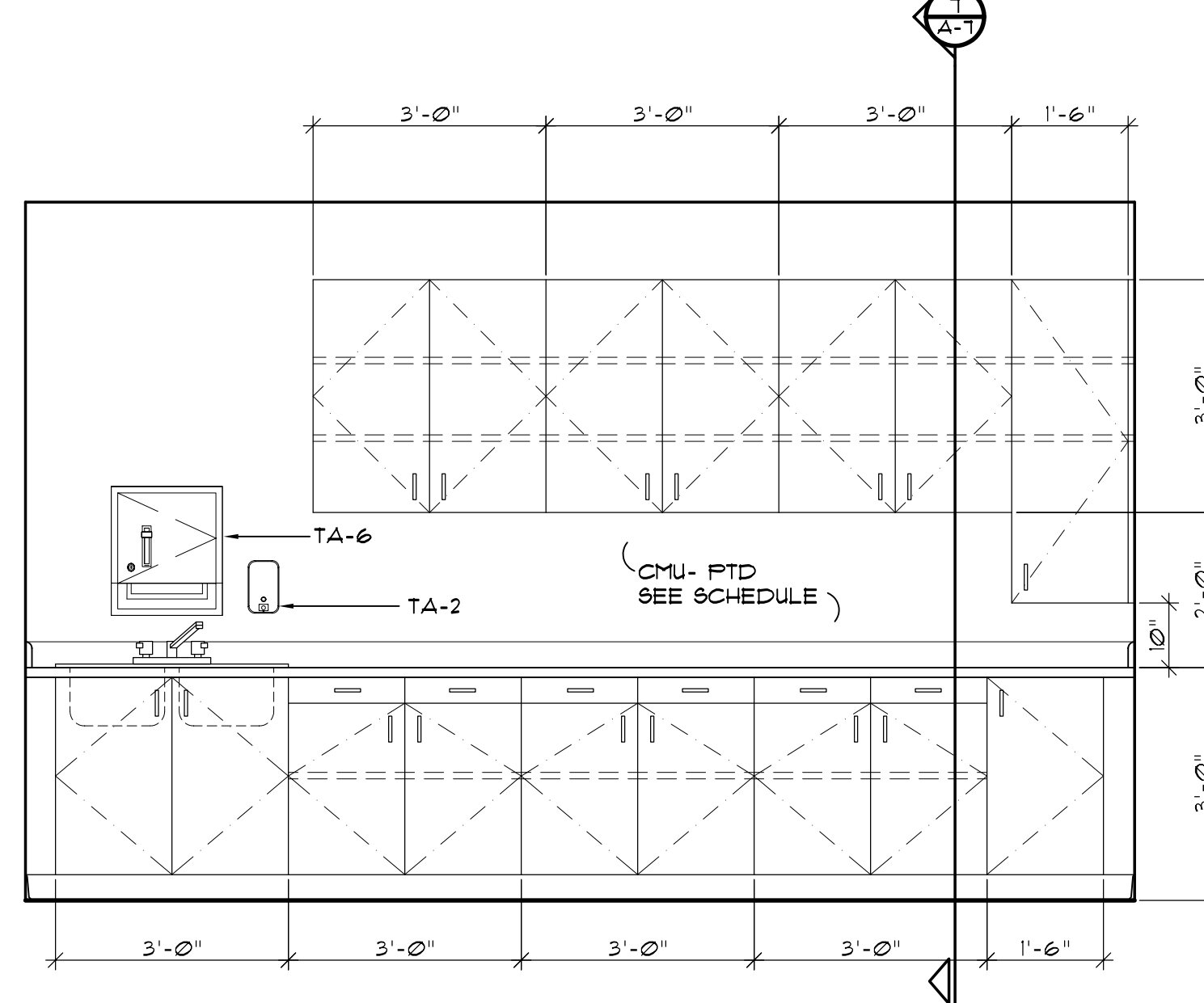
1. PLASTIC LAMINATE EXTERIOR/WHITE MELAMINE COATING INTERIOR
2. INTERIOR
3. CONCEALED HINGES THROUGHOUT
4. 4" SATIN CHROME PULL WIRES
5. ALL SHELVEYS ADJUSTABLE, W/ COUNTERSUNK STANDARDS.



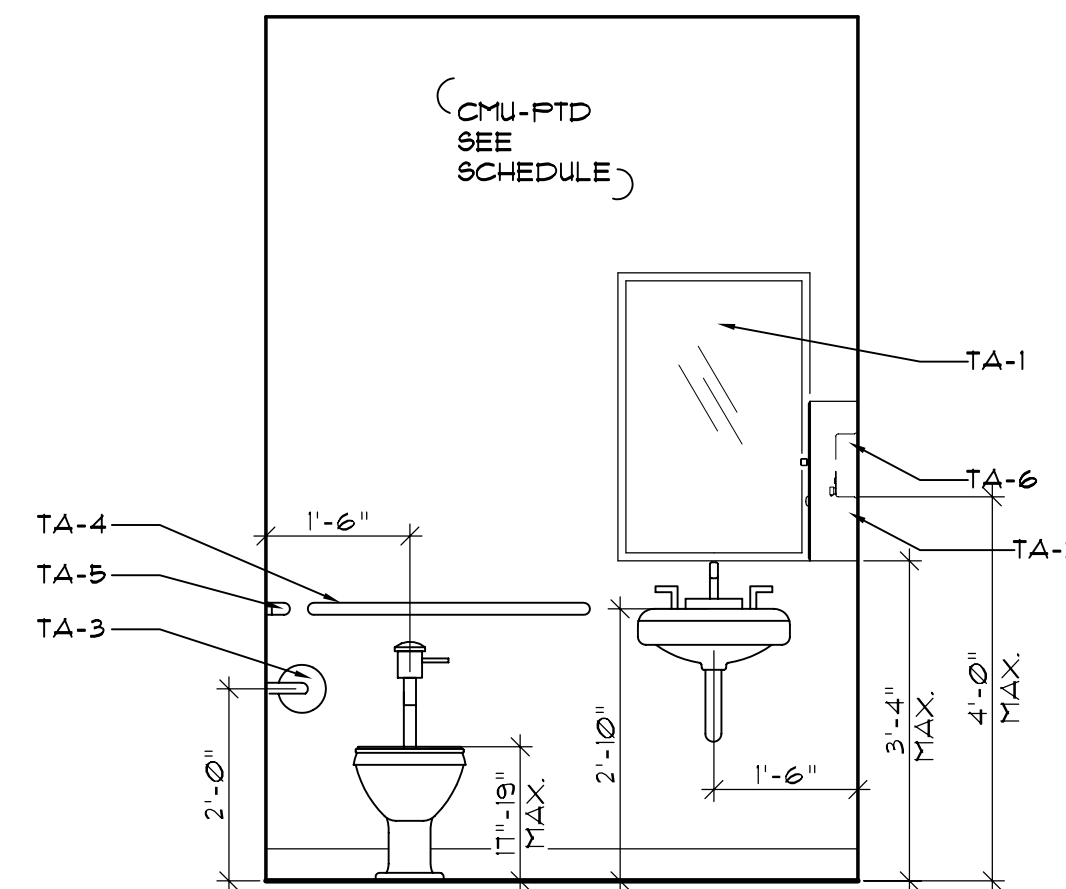
**1 CABINET DETAIL**  
SCALE: 1" = 1'-0"



**9 VET EXAM**  
SCALE: 1/2" = 1'-0"

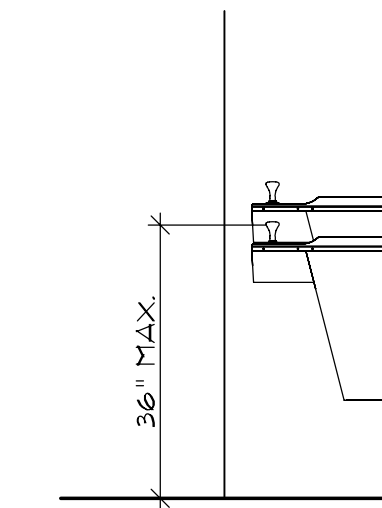


**6 FOOD PREP**  
SCALE: 1/2" = 1'-0"



ALL N.I.C. APPLIANCES & FIXTURES SHALL BE ADA COMPLIANT.

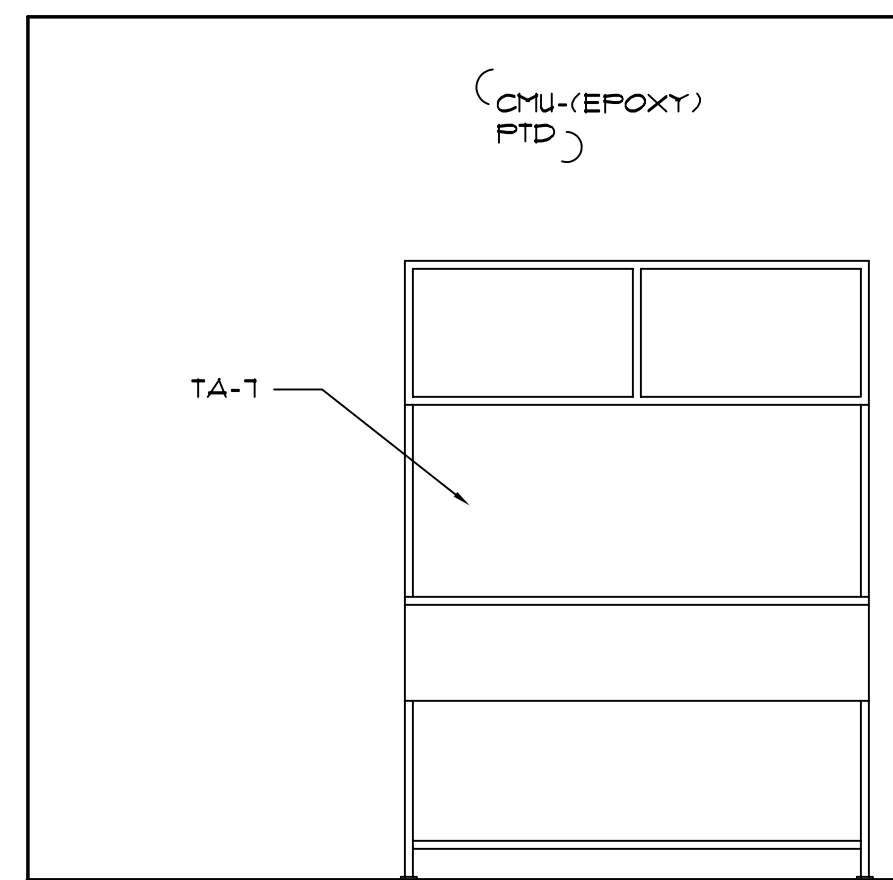
**4 JANITOR 118**  
SCALE: 1/2" = 1'-0"



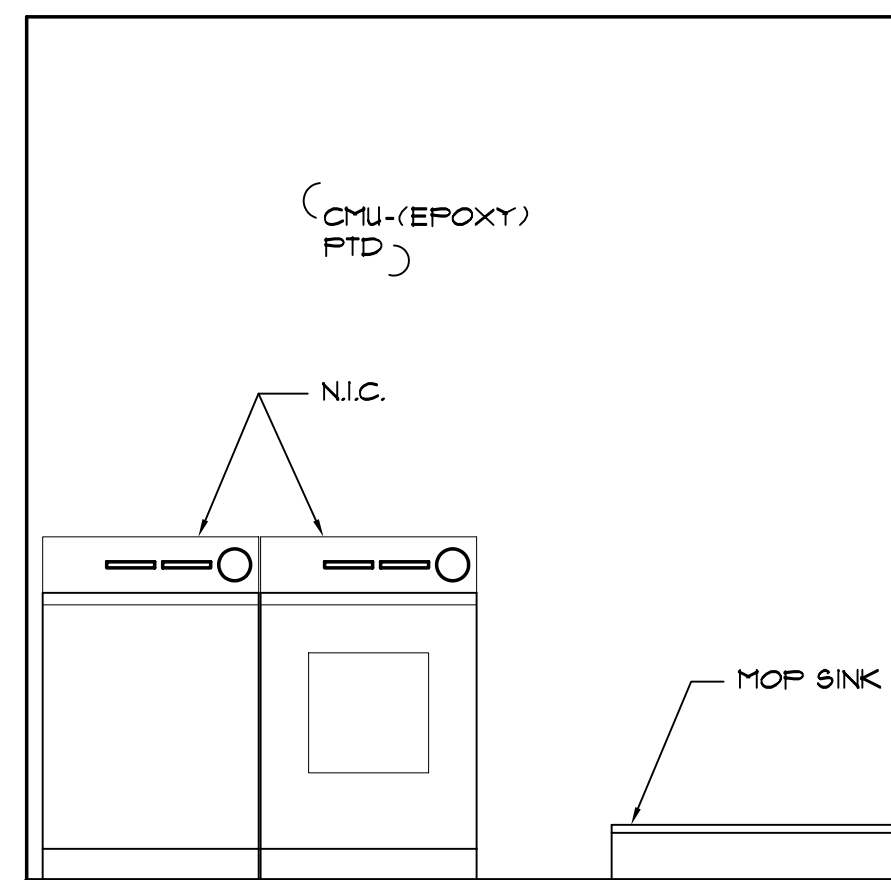
**8 WATER COOLER MOUNTING HEIGHT**  
SCALE: 1/2" = 1'-0"

TOILET ACCESSORIES SCHEDULE			
MARK	ITEM	MTG. HT.	REMARKS
TA - 1	MIRROR 24"X 36" B-293	3'-4"	HEIGHT TO BOTTOM, CENTER ON SINK
TA - 2	SOAP DISPENSER B-2111	4'-0" MAX	HEIGHT TO DISPENSER
TA - 3	TOILET PAPER HOLDER B-2130	2'-0"	HEIGHT TO CENTER
TA - 4	GRAB BAR 42" B6806X42 W/ CONCEALED MOUNTING W/ SNAP FLANGE	2'-11"	HEIGHT TO CENTER
TA - 5	GRAB BAR 36" B6806X36 W/ CONCEALED MOUNTING W/ SNAP FLANGE	2'-11"	HEIGHT TO CENTER
TA - 6	PAPER TOWEL DISPENSER B-38616	3'-4" MAX	HEIGHT TO BOTTOM
TA - 7	STAINLESS STEEL DOG WASH TUB 4 CABINET SET BY FETEDGE TP9100		SUBMIT SHOP DRAWING FOR APPROVAL

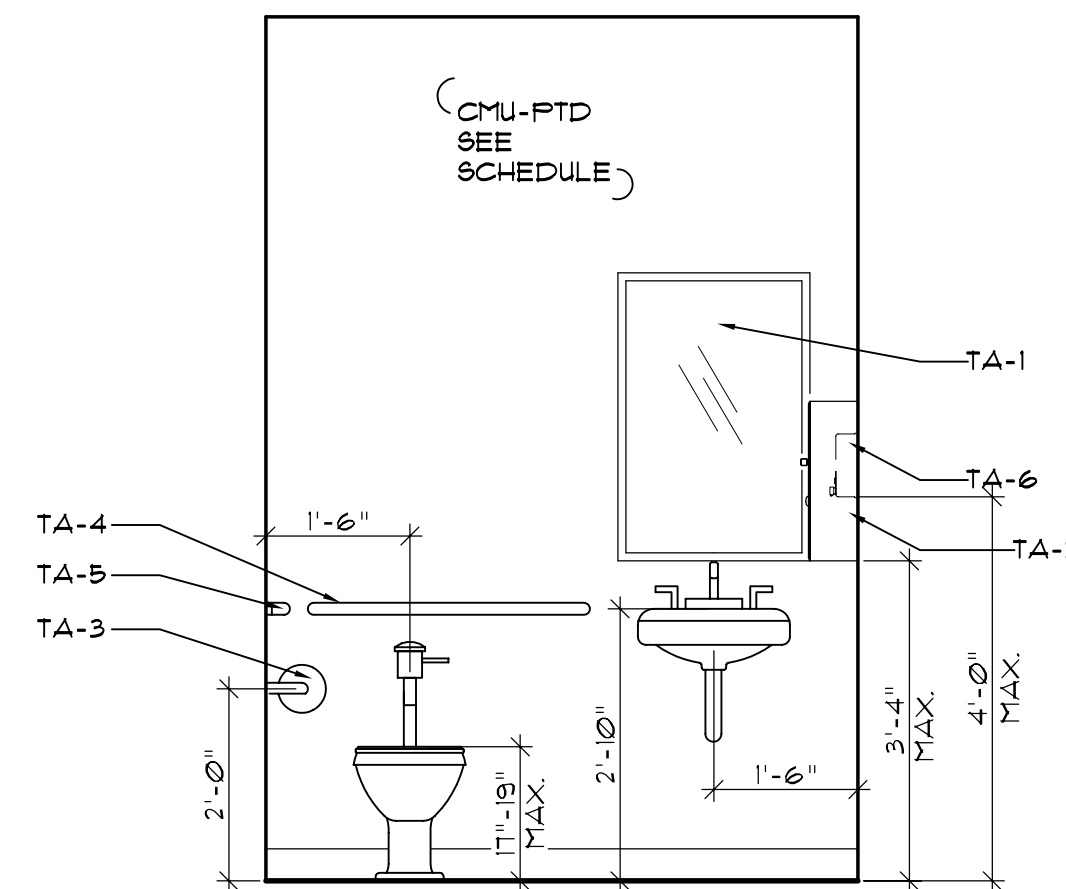
- ACCESSORIES TO BE BY BOBRICK, BRADLEY, OR EQUAL. MODEL NUMBERS CALLED BY BOBRICK. SUBMIT CUT SHEETS FOR APPROVAL.
- SUBMIT SHOP DRAWINGS ON ALL CABINETRY & MILL WORK.
- CONFORM TO ALL NC BUILDING CODE (VOL. 1-C) CLEARANCES AND DIMENSIONS.
- STAINLESS STEEL GRAB BAR W/ 250\* DOWNWARD PRESSURE BLOCK AS REQ'D
- ALL APPLIANCES & FIXTURES SHALL BE ADA COMPLIANT WHEN INSTALLED (WHETHER BY CONTRACTOR OR BY OWNER).



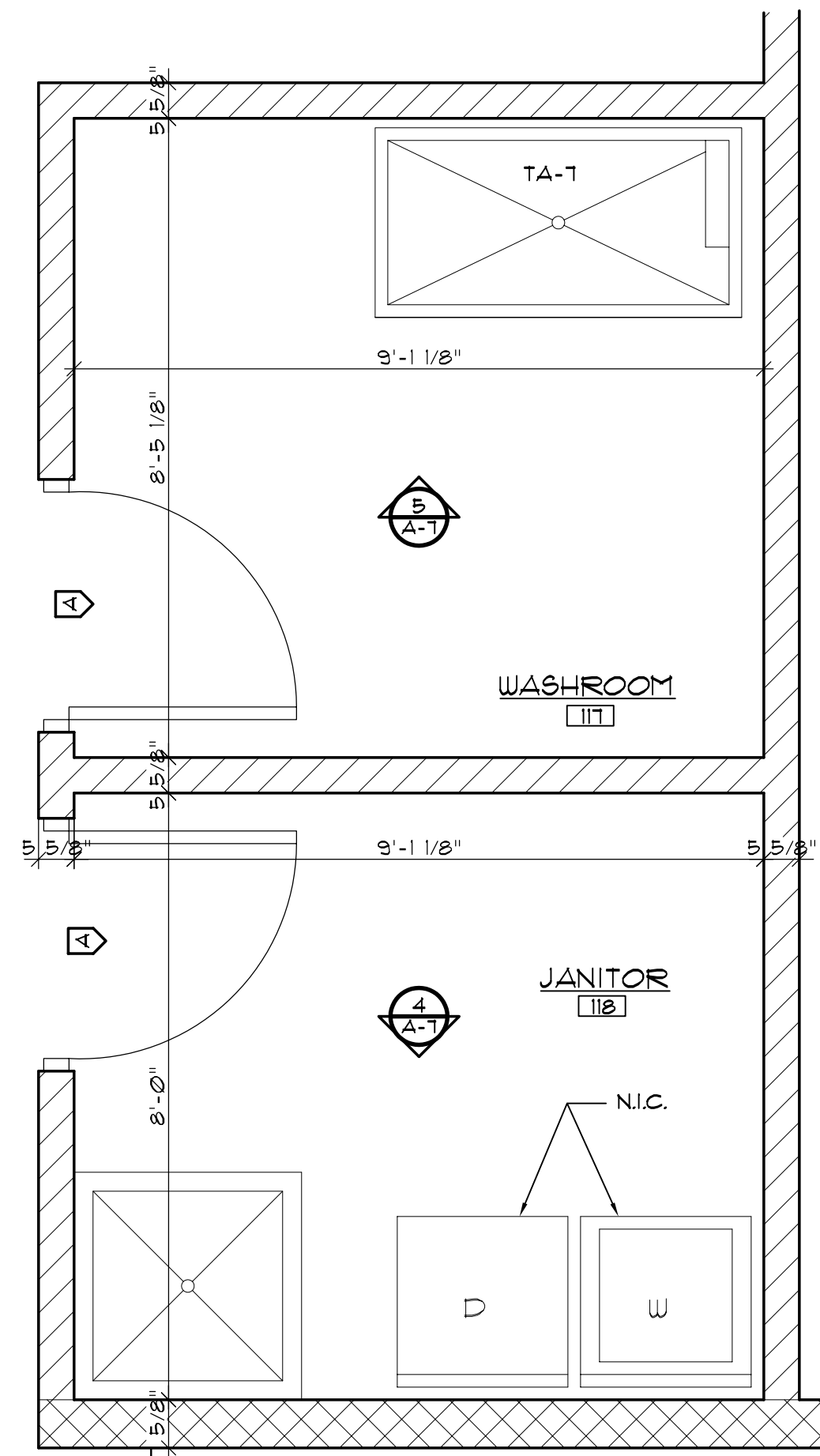
**5 WASHROOM 117**  
SCALE: 1/4" = 1'-0"



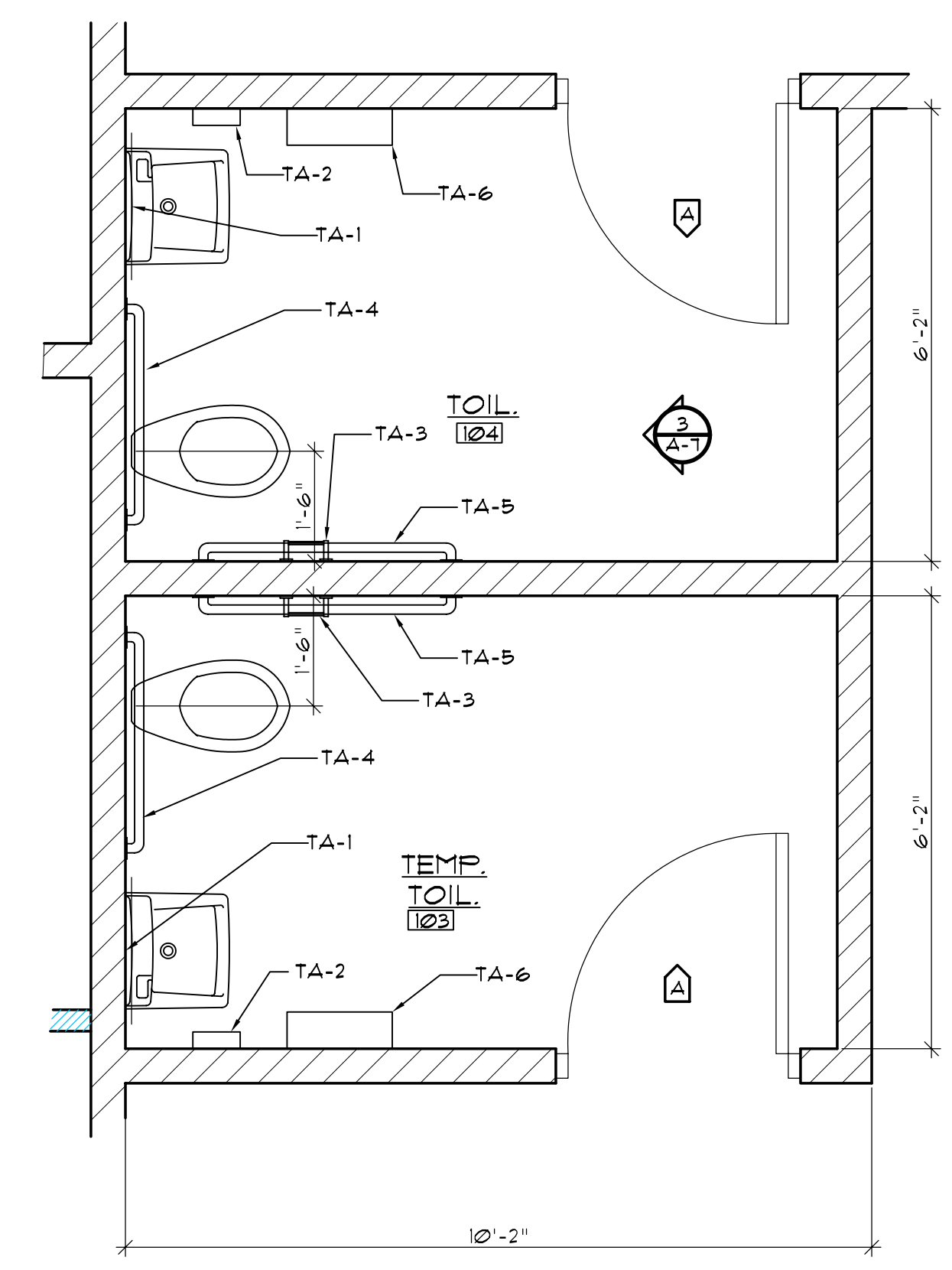
**4 JANITOR 118**  
SCALE: 1/2" = 1'-0"



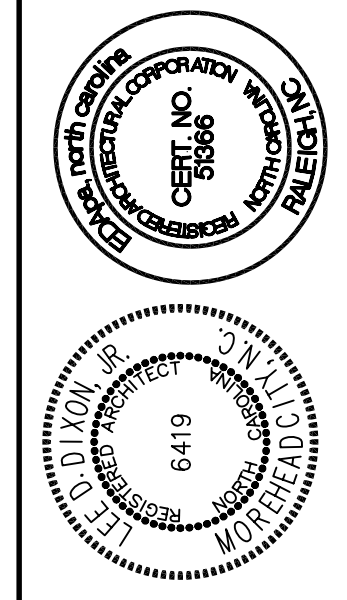
**3 TOILET 104**  
SCALE: 1/2" = 1'-0"



**2 ENLARGED PLAN**  
SCALE: 1/2" = 1'-0"



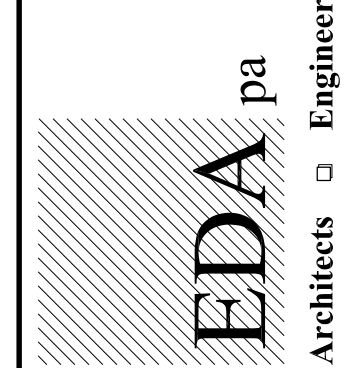
**1 ENLARGED TOILET PLAN**  
SCALE: 1/2" = 1'-0"



USE OF SEA AS DRAWINGS, SPECIFICATIONS, AND OTHER DOCUMENTS PREPARED BY EDA pa SHALL BE LIMITED TO THIS PROJECT. ANY REUSE OF THESE DOCUMENTS FOR ANY OTHER PROJECT WITHOUT THE WRITTEN CONSENT OF THE DESIGNER IS STRICTLY PROHIBITED.

4206 Bridges Street Extension, Suite C  
Morehead City, North Carolina 28557  
Telephone: 252.247.6074 Fax: 252.247.6074  
Email: eda@eda.com

Raleigh, North Carolina  
Morehead City, North Carolina



**ROCKINGHAM COUNTY ANIMAL FACILITY**  
WENTWORTH, NORTH CAROLINA

ENLARGED PLANS INTERIOR ELEVATIONS

2008409

ISSUED: 08 DEC. 09  
DWG BY:LSA, CLW  
CKD BY:LDD

REVISIONS

SHEET NO. **A-7**  
OF

**BASE BID**